

NZ THEORY EXAM

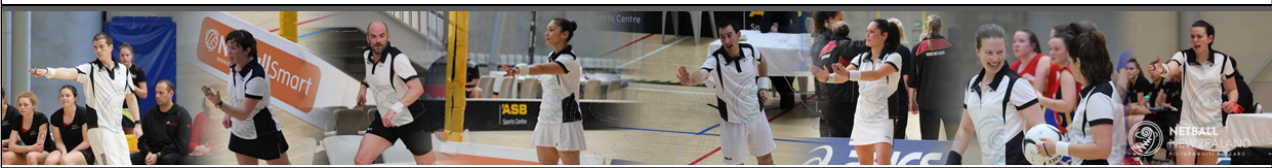
June 2017



Time Allowed: 90 minutes

PLEASE READ THESE CAREFULLY BEFORE STARTING THE TEST

1. Teams are referred to as Black and White.
 2. It is NOT necessary to specify the infringer must stand beside and away from the player taking the penalty. Similarly, it is NOT necessary to specify the Umpire blows the whistle when penalising an infringement.
 3. Read all questions carefully.
 4. Answer only what is asked in a clear and concise manner.
 5. For infringements where a general statement can cover a wide range of specific infringements, the specific statement must also be used. Example: Incorrect playing of the ball - Tip, bat, catch.
- THERE ARE 40 QUESTIONS and a total of **80 marks** available.
 - **You must gain 68 marks (85%) in order to pass.**



Page 1

TECHNICAL SPECIFICATIONS

This section of the exam, tests your knowledge of the court, it's related areas, the goal posts, and the ball.

1. The two Longer sides of the court are called sidelines and measure:

- 30.5m (100ft)
- 3.05m (10ft)
- 35m (115ft)

Page 2

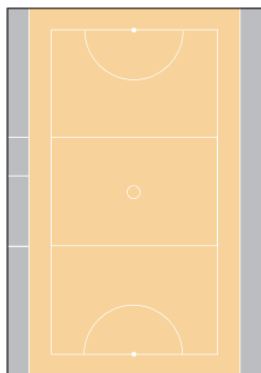
© 2017 Netball New Zealand

TECHNICAL SPECIFICATIONS

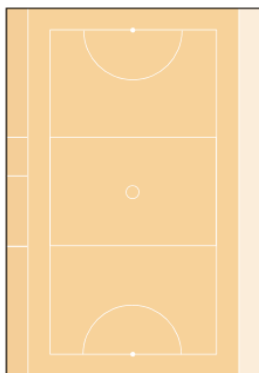
This section of the exam, tests your knowledge of the court, it's related areas, the goal posts, and the ball.

2. Drag and drop the correct name of the Court related area shown in yellow into the boxes below.

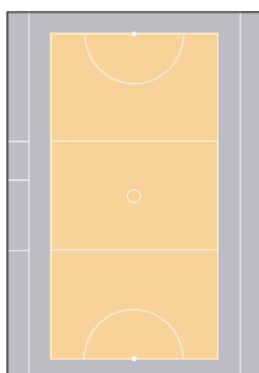
Field of Play



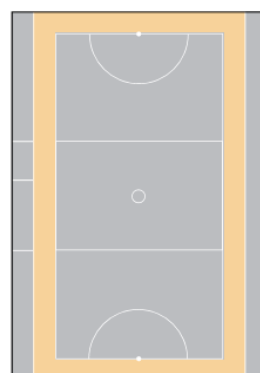
Playing Enclosure



Court



Court Surround



Page 3

TECHNICAL SPECIFICATIONS

This section of the exam, tests your knowledge of the court, it's related areas, the goal posts, and the ball.

3. The Radius of the Goal Circle is?

4.9m

4. The Padding on the Goal Posts is not more than?

50mm

Page 4

MATCH PERSONNEL

This section of the exam tests your knowledge around the team, match officials and technical officials.

5. When do the Umpires toss for goal ends?

- After the captains have notified the result of their toss for goal ends or first centre pass.
- Before the start of play.
- When the teams have taken the court.

6. How many Scorers are there in a match?

- 2
- 3
- 4

7. Who are the Match Officials (Select all that apply)?

- Two Umpires
- Reserve Umpire
- Timekeepers
- Scorers

Page 5

MATCH PERSONNEL

This section of the exam tests your knowledge around the team, match officials and technical officials.

8. Can a Captain clarify a rule during a blood stoppage?

- Yes
- No

9. Can bench players leave the team bench during play?

- Yes
- No

Page 6

STARTING PLAY

This section of the exam tests your knowledge of the rules at the start of play including; organisation, centre pass, out of court, throw in and toss up.

10. If before the whistle is blown, Black WA and White WD enter the Centre Third simultaneously, and the ball is caught by the Black WA. What action would the umpire take?

Simultaneous off side Black WA and White WD - ball involved. Toss up in the centre third where the players landed.

STARTING PLAY

This section of the exam tests your knowledge of the rules at the start of play including; organisation, centre pass, out of court, throw in and toss up.

11. Black C is taking the Centre Pass. Before the whistle is blown Black WA and White WD enter the Centre Third simultaneously, neither player makes contact with the ball.

11a. What is the Infringement?

- No infringement
- Centre Pass not taken correctly
- Simultaneous Breaking Black WA & White WD

11b. What is the Sanction/Action?

- Let play continue
- Free Pass Black in Centre Third near the Transverse Line
- Toss Up between Black WA and White WD in Centre Third

STARTING PLAY

This section of the exam tests your knowledge of the rules at the start of play including; organisation, centre pass, out of court, throw in and toss up.

12. Black GA and White GD take part in a Toss Up in the Goal Circle. White GD is penalised for moving too soon. Black GS takes the ball and shoots successfully for goal.

12a. What is the Infringement?

- Shooting from a free pass Black GS
- Moving at a Toss Up White GD
- No infringement

12b. What is the Sanction/Action?

- Let play continue
- Free Pass White where Black GS shot for goal, discount goal
- Free Pass Black where White GD moved at the Toss Up

Page 9

DURING THE MATCH

This section of the exam tests your knowledge of the rules during the match.

13. Are teams allowed to make changes when play is stopped to deal with blood?

- Yes
- No

14. Substitutions and team changes can happen during an interval? (True/False)

15. A late player may enter the game as soon as they arrive at the courts. (True/False)

16. The coach is allowed to call for a stoppage when a player is hurt. (True/False)

17. A player who is on the ground may roll the ball to herself. (True/False)

Page 10

© 2017 Netball New Zealand

DURING THE MATCH

This section of the exam tests your knowledge of the rules during the match.

18. Black WD catches the ball and rolls it to Black GS:

18a. What is the Infringement?

- No Infringement
- Rolling the ball to another player Black WD

18b. What is the Sanction/Action?

- Free Pass White where Black WD rolls the ball
- Free Pass Black where Black GS caught the ball
- Let play continue

Page 11

DURING THE MATCH

This section of the exam tests your knowledge of the rules during the match.

19. Black GK and White GS simultaneously land in the Centre Third as Black WA catches the ball in Blacks Goal Third.

19a. What is the Infringement?

- No Infringement
- Simultaneous offside Black GK and White GS ball not involved
- Ball over a Third

19b. What is the Sanction/Action?

- Let play continue
- Toss up in Goal Third by Black GK and White GS
- Toss up in Centre Third by any 2 players allowed in that area
- Free Pass in Goal Third White near the transverse line

Page 12

© 2017 Netball New Zealand

DURING THE MATCH

This section of the exam tests your knowledge of the rules during the match.

20. White C catches the ball in Black's Goal Third. White C steps forward into the Centre Third and passes the ball. The ball is intercepted by Black GD standing in White's Goal Third.

20a. What is the Infringement?

- No Infringement
- Ball Over a Third White
- Ball Over a Third Black

20b. What is the Sanction/Action?

- Let Play Continue, Advantage Rule Applies
- Free Pass Black in Goal Third where ball was caught
- Free Pass White in Goal Third where ball was caught

Page 13

DURING THE MATCH

This section of the exam tests your knowledge of the rules during the match.

21. Black C tips the ball in an uncontrolled manner twice in the Goal Third before batting the ball to Black WA standing in the Centre Third.

21a. What is the Infringement?

- Replayed Ball Black C
- No Infringement
- Tipping the ball more than once, then batting to another player Black C

21b. What is the Sanction/Action?

- Let Play Continue
- Free Pass White where Black WA caught the ball
- Free Pass White where Black C tips the ball in an uncontrolled manner

Page 14

© 2017 Netball New Zealand

DURING THE MATCH

This section of the exam tests your knowledge of the rules during the match.

22. What would the umpire's actions be if the White C caught the ball in the centre third and stepped back into Black's Goal Third before passing the ball to the White GS?

No infringement, let play continue.

Page 15

MATCH DURATION

This section of the exam tests your knowledge around match duration including match length and extra time.

**23. If a game is drawn at full time and a result is required, what is the procedure?
List all 7 steps in the correct order for full marks, use numbers to indicate each step.**

1. Prior to the match commencing the umpires will check with the event organiser whether in the event of a tie at the end of full time if extra time will be played to determine a winner. And the length of each half will also be specified by the event organiser.
2. There is a 4 minute interval at the end of full time
3. Extra time will consist of two halves of equal length, not exceeding 7 minutes each.
4. Half time will be 1 minute
5. Teams change ends at half time
6. The first centre pass in each half is taken by the team entitled to the next centre pass.
7. In the event of a tie remaining at the end of extra time, a visual signal is placed at the official bench to indicate that play will continue until one team leads by two goals.

Page 16

© 2017 Netball New Zealand

MATCH DURATION

This section of the exam tests your knowledge around match duration including match length and extra time.

24. What is the length of the interval in the following game situations?

24a. Half time during a one hour game

- 5 or 10 minutes
- 7 or 12 minutes
- 12 or 8 minutes

24b. Half time during extra time

- 3 minutes
- 1 minute
- 5 minutes

25. White GS is shooting for goal and the Black GK is defending from 0.6m. Both umpires blow their whistles at the same time. The controlling umpire for the obstruction and the co-umpire for the end of the quarter. What is the action of the Controlling Umpire?

- Award Penalty Pass to White and allow the shot to be taken
- End quarter

Page 17

PROTOCOLS

This section of the exam, tests your knowledge of the games protocols.

26. White GK knocks the Goalpost causing Black's shot at goal to miss. Simultaneously to Umpire A blowing the whistle for this infringement, Umpire B blows to signal the end of the game.

26a. What is the Infringement?

- No Infringement
- Whistle went at the same time as both penalty and end of the game was signalled
- Causing the goalpost to move that interferes with the shot at goal

26b. What is the Sanction/Action?

- Let Play Continue
- Penalty Pass Black where GK knocks the Goalpost
- Game ends as both the end of the game and the Goalpost interference occurred simultaneously

Page 18

© 2017 Netball New Zealand

PROTOCOLS

This section of the exam, tests your knowledge of the games protocols.

27a. What is the whistle that Umpires use at the beginning of a period of play or to restart play after a stoppage?

- medium whistle
- long whistle roll
- medium whistle roll
- long whistle

27b. During Play (for an infringement, a toss up or ball out of court) what whistle is used?

- medium whistle
- long whistle roll
- medium whistle roll
- long whistle

27c. What whistle is used to instruct the timekeeper to hold time?

- medium whistle
- long whistle roll
- medium whistle roll
- long whistle

Page 19

PROTOCOLS

This section of the exam, tests your knowledge of the games protocols.

27d. What whistle is used to end a period of play?

- medium whistle
- long whistle roll
- medium whistle roll
- long whistle

27e. At the 10 second warning, what type of whistle is used?

- medium whistle
- long whistle roll
- medium whistle roll
- long whistle

27f. At the 30 second warning, what type of whistle is used?

- medium whistle
- long whistle roll
- medium whistle roll
- long whistle

Page 20

© 2017 Netball New Zealand

SCORING A GOAL

This section of the exam tests your knowledge around scoring a goal including; requirements for scoring a goal and taking a shot.

28. Black GS is shooting for goal. White GD & White GK are both defending from the correct distance. What action would the Umpire take in the following situations?.

28a. White GK deflects the shot at goal and the ball passes completely through the goal ring

- Count goal
- Discount Goal

28b. White GK jumps and lands very close to Black GS and immediately moves out of the way.

- Let Play Continue
- Penalty Pass Black where White GK landed

28c. White GD holds on to White GK to assist with the lean over the ball. At the end of three seconds, White GK places her hands on the ball.

- Free Pass White where Black GS held the ball
- Penalty Pass Black where White GK placed her hands on the ball

28d. Black GS pushes the ball towards White GD's face before shooting successfully for goal.

- Let play continue, Count goal
- Discount Goal, Penalty Pass White where Black GS pushes the ball towards White GD

Page 21

OFFSIDE/TOSS-UP

This section of the exam tests your knowledge around offside and toss -up's

29. Black GS and White GK both attempt to intercept a pass that has been thrown from the Black GK. They both go offside into the Centre Third as the White GK tips the ball. The ball is picked up by the Black GA in the Goal Third.

29a. What is the Infringement?

- No Infringement
- Simultaneous Offside Black GS/White GK
- Ball Through a Third Black

29b. What is the Sanction/Actions?

- Let Play Continue
- Toss Up in Goal Third Black GS/White GK
- Toss up in the Centre Third between any two players allowed in that area,
- Free Pass White in Black's Goal Third near Transverse Line.

Page 22

© 2017 Netball New Zealand

ADVANTAGE

This section of the exam tests your knowledge of advantage

30. Black GS and White GK jump to intercept a pass that has been thrown by the Black GK standing in White's Goal Third. Black GS goes offside into the Centre Third. The ball is caught by the White GK. What action would the umpire take?

The umpire should refrain from blowing the whistle for an infringement when by doing so the non-infringing team would be disadvantaged.

The umpire indicates advantage is being applied by:

- a. Calling 'advantage incorrect entry into the centre third Black GS'
- b. Using the offside handsignal - Hand traces a small upward arc in the direction of the player movement
- c. Letting play continue

Page 23

GAME MANAGEMENT

This section of the exam tests your knowledge around game management including actions that may be taken by umpires, foul play and discipline of team officials and bench players.

31. The ball goes out of Court and a Throw In is awarded to Black. Black GA leaves the court to retrieve the ball and passes the ball to her GS who is ready to Throw In. Black GA chooses to re-enter the court from a different area than she left the Court. White GK prevents Black GA from re-entering the Court.

31a. What is the Infringement?

- No Infringement
- Black GA delaying Play
- White GK not allowing Black GA to re-enter the Court

31b. What is the Sanction/Action?

- Let Play Continue
- Penalty Pass on Court where White GK wouldn't allow Black GA to re-enter the Court
- Penalty Pass on Court where Black GA was delaying Play
- The pass is advanced and a caution is given

Page 24

© 2017 Netball New Zealand

CONTACT

This section of the exam tests your knowledge around contact including; contact and contest, interference.

32. Black WD and White C jump to catch a pass. Black WD catches the ball, lands, and turns, pushing the ball into the White C.

32a. What is the Infringement?

- No infringement
- Contact Black WD
- Obstruction White C

32b. What is the Sanction/Action?

- Let Play Continue
- Free Pass White where Black WD pushed the ball into White C
- Penalty Pass White where Black WD pushed the ball into White C
- Penalty Pass Black where White C obstructed

Page 25

CONTACT

This section of the exam tests your knowledge around contact including; contact and contest, interference.

33. White WA jumps to receive a pass at the edge of the Goal Circle. Black WD moves into the landing space of White WA who falls and lands in the Goal Circle.

33a. What is the Infringement?

- Causing Contact Black WD
- No Infringement
- Offside White WA

33b. What is the Sanction/Action?

- Let Play Continue
- Free Pass in Goal Circle Black
- Penalty Pass White where Black WD moved into White WA's landing space

Page 26

© 2017 Netball New Zealand

CONTACT

This section of the exam tests your knowledge around contact including; contact and contest, interference.

34. Black GS and White GK both attempt a rebound in the goal circle and simultaneously knock each other.

34a. What is the Infringement?

- No Infringement
- Simultaneous Contact Black GS & White GK

34b. What is the Sanction/Action?

- Toss Up in Goal Circle Black GS /White GK
- Let Play Continue

Page 27

OBSTRUCTION

This section of the exam tests your knowledge around obstruction including; obstruction of a player in possession of the ball, obstruction of a player not in possession of the ball, defence involving a player outside the court.

35. Black WA leaves the court to defend White C who has left the court to gain a better playing position.

35a. What is the Infringement?

- No infringement
- Defending a player while out of court Black WA
- Leaving the court for no reason White C

35b. What is the Sanction/Action?

- Let Play continue
- Penalty pass White, on court close to where the Black WA was defending White C
- Free Pass, on court Black, close to where White C left the court

35c. Explain the reason for your action.

The answer is: A player may defend an opponent who has chosen to go out of court provided the defending player does not leave the court

Page 28

© 2017 Netball New Zealand

OBSTRUCTION

This section of the exam tests your knowledge around obstruction including; obstruction of a player in possession of the ball, obstruction of a player not in possession of the ball, defence involving a player outside the court.

36. Black GA looks to pass the ball to Black C on the Goal Circle edge. White WD standing right next to Black C has one arm extended in front of Black C preventing Black C from catching the ball. Black GA releases the ball at 3 seconds.

36a. What is the Infringement?

- No Infringement
- Held Ball Black GA
- Obstruction White WD

36b. What is the Sanction/Action?

- Let Play Continue
- Free Pass White where Black GA held the ball
- Penalty Pass Black outside Goal Circle where White WD obstructed

Page 29

OBSTRUCTION

This section of the exam tests your knowledge around obstruction including; obstruction of a player in possession of the ball, obstruction of a player not in possession of the ball, defence involving a player outside the court.

37. White GK defends Black GS from 0.9m with one foot on the Goal Line. Black GS shoots successfully for goal.

37a. What is the Infringement?

- No Infringement
- Obstruction White GK
- Defending from out of court White GK

37b. What is the Sanction/Action?

- Let play Continue, Count Goal
- Penalty Pass inside Goal Circle Black where White GK was defending
- Throw in Black where White GK was defending from out of court

Page 30

© 2017 Netball New Zealand

UMPIRE HAND SIGNALS

This section of the exam tests your knowledge of the hand signals used to support the decisions made while officiating the game of netball.

38. Drag and drop correct hand signal into the boxes below.

Hold Time

Stepping

Advantage

Ball over a third

Ordering Off

Centre positioned incorrectly

Suspension

Umpires' Time

Official Warning

Incorrect playing of the ball

Direction of Pass

Short Pass

Footwork

Goal not Scored



Page 31

UMPIRE HAND SIGNALS

This section of the exam tests your knowledge of the hand signals used to support the decisions made while officiating the game of netball.

38. Drag and drop correct hand signal into the boxes below.

Hold Time

Advantage

Stepping

Ball over a third

Direction of Pass

Short Pass

Goal not Scored

Centre positioned incorrectly

Umpires' Time

Footwork

Incorrect playing of the ball

Ordering Off

Official Warning

Suspension



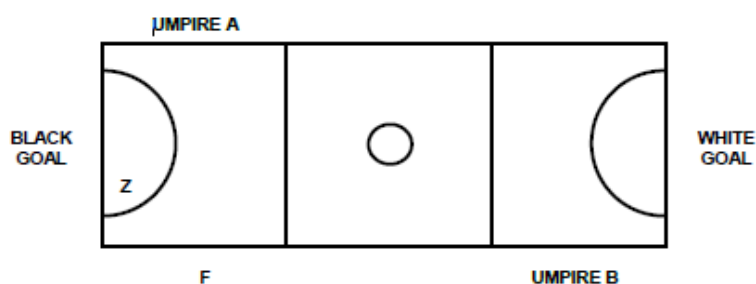
Page 32

© 2017 Netball New Zealand

MATCH PERSONNEL AND PROCEDURES

This section of the exam tests your knowledge around umpire and team official procedures.

Refer to the diagram below for questions 36 - 37



39. White has the first Centre Pass at the start of a game.

39a. Which Umpire starts play?

- Umpire A
 Umpire B

39b. Which Umpire would take a Toss Up at Point Z?

- Umpire A
 Umpire B

40. Black scores the first goal.

40a. Which Umpire is responsible for restarting play?

- Umpire A
 Umpire B

40b. Which Umpire is responsible for penalising out of Court at Point F?

- Umpire A
 Umpire B

Page 33

END OF THE EXAM

You have reached the end of this exam.



**KEEP
CALM
AND
GOOD
LUCK**

Page 34

© 2017 Netball New Zealand

END OF THE EXAM

You have reached the end of this exam.

