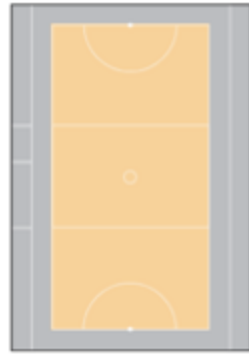
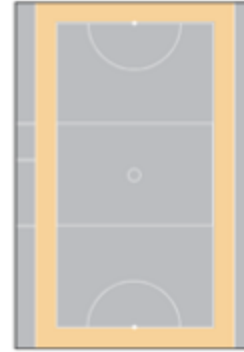


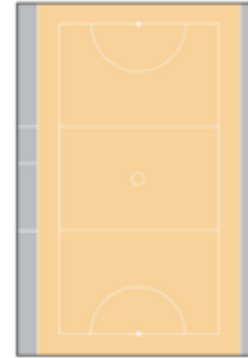
New Zealand Theory Exam

September 2022

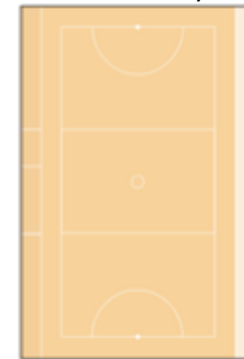
	Question	Answer	Rule	Marks
Technical Specs	A goal circle is located at each end of the court. This is a semicircle with a of radius of: (a) 4m (13ft) (b) 4.9m (16ft) (c) 4.25m (13.9ft)	(b) 4.9m (16ft)	Rule: 3.1.1 (v)	1
Technical Specs	During play only on-court players and umpires are permitted in the field of play (True/False).	TRUE	3.1.3	1
Technical Specs	Label the Court related areas shown by the highlighting– choose from; <ul style="list-style-type: none"> • Court, • Court Surround, • Field of Play • Playing Enclosure 			4



Court Surround



Field of Play



		Playing enclosure		
Match Personnel	<p>Who is responsible for each of the following? (Select from the following) Supervising a suspended player during the suspension period.</p> <p>a) Reserve Umpire b) Scorers c) Primary Care Person d) Both Umpires e) Captain/Timekeeper</p>	Reserve Umpire	5.2.2 (iv)	1
Controlling Play	Black GS is allowed to shoot for goal if she wins the ball at a toss up? True/False	True	Rule: 8.5.3(ii)	1
Match Procedures	The Umpire controlling the centre pass is responsible for penalising any infringements by the Centre taking the Centre pass. (If a sanction is awarded in the co-umpire's half, the co-umpire assumes control once set). (True False)	True	6.1.1 (v)	1
Match procedures	Umpires must blow their whistles when the ball goes out of court .(True/False)	False	6.1.3 (i)	1
Technical Specs	The Padding on the Goal Posts is not more than?	50mm (2in)	3.2 (i) (c)	1
Controlling Play	Black WA and White C jump to catch a pass. White C bats the ball to White GS (while still in the air), standing near the Goalpost. As White GS catches the ball, Black WA and White C land simultaneously in the Goal Circle. White GS shoots successfully for goal.			
Controlling Play	What is the infringement?	Simultaneously offside Black WA and White C	9.7.1 (ii)(B)	1
Controlling Play	What actions would the umpire take?	Award a Toss-up outside Goal Circle by Black WA and White C		1
Controlling Play	Explain the reason for your action.	White C batted the ball to White GS before landing offside with Black WD. Toss		1

		up required. Ball was involved in the simultaneous offside - Toss up outside Goal Circle as neither player allowed in Goal Circle, discount goal.		
Technical Specs	A spare netball must be at the official bench. (True/False)	True	Appendix A 3.3(iii) (a) & Rule 3.3(ii)	1
Scoring a goal	White GA is shooting a goal. Black GK who is standing out of Court, knocks the Goal Post causing the shot to miss. What action would the Umpire take? a) Penalty Pass where White GA shot for goal b) Penalty Pass on Court near where Black GK was standing c) Throw in White near where Black GK was standing d) Free Pass White where White GA Shot for goal	b) Penalty Pass on Court near where Black GK was standing	10.2 (ii)	1
Match Personnel	Prior to the game the Captains toss for the choice of goal end or first Centre Pass. Who must they notify of the result? A) their team, b) their coach, c) scorers d) scorers and umpires.	d) scorers and umpires.	5.1.1(v)(a)	1
Controlling Play	Black's centre pass is caught by White WD who lands with feet astride the transverse line. White WD then passes the ball to White GA who is standing in the White's goal third			
Controlling Play	What is the infringement?	Through a third White	8.2.2 (vi) (b) 9.5.2(i)	1
Controlling Play	What action would the Umpire take?	Free pass Black in White's goal third by the transverse line	Sanction 9.5.2	1
During the match	White GA catches the ball very close to the Goalpost. As it is difficult to shoot from this position, White GA bounces the ball off the goalpost, catching the ball in a better position before scoring a successful goal.			

During the match	What is the infringement?	No infringement	9.4.1 (i) & (iv)	1
During the match	What action would the Umpire take?	Let play continue, count the goal		1
Match Personnel	The scorers must call all centre passes. (True/False)	False	5.3.1 (ii)(d)	1
Match Personnel	If a team has more than 7 players on the court, additional players are immediately sent from the court. (True/False)	True	5.1 (ii) (b)	1
Controlling Play	The game is due to start, and White team have only 4 players. Before 30 seconds has elapsed, the 5th player for the White team arrives and takes her position on the court.			
Controlling Play	What is the Infringement: (a) Delaying play White, (b) No Infringement, (c) Failure to take the court at the correct time	(c) Failure to take the court at the correct time.	8.1.1(i)	1
Controlling Play	What is the Sanction/Action: (a) Let Play continue, (b) Penalty Pass to Black taken in Centre Third by the transverse line at the goal end of the non-infringing team. The centre stands out of play for the penalty pass (c) Blow whistle to start the game then award a Free Pass to Black taken in the Centre Third by the transverse line at the goal end of the non-infringing team.	(b) Penalty Pass to Black taken in Centre Third by the transverse line at the goal end of the non-infringing team. The centre stands out of play for the penalty pass.	8.1.1(a) Sanction	1
Controlling Play	White WA catches the ball and rolls it to White C.			
Controlling Play	What is the infringement?	Rolling the ball to another player White WA	9.4.1(vi)	1
Controlling Play	What is the Sanction/Action?	Free pass Black where White WA rolled the ball to White C		1
Controlling Play	Black WA leaves the court to defend White C who has left the court to gain a better playing position.			
Controlling Play	What is the infringement? a) no infringement b) Defending a player while out of court Black WA	b) Defending a player while out of court Black WA,	8.3.4(i)	1

	c) leaving the court for no reason White C			
Controlling Play	What is the Umpire Action/Sanction? a) let play continue, b) Penalty pass White, on court close to where the Black WA was defending White C. c) Free Pass, on court Black, close to where White C left the court	b) Penalty pass White, on court close to where the Black WA was defending White C.	Sanction	1
Controlling Play	Explain the reason for your action	A player may defend an opponent who has chosen to go out of court, providing the defending player does not leave the court.	8.3.4	1
Multiple rules	Black GS is shooting for goal. White GD and White GK are both defending from the correct distance. What action would the Umpire take in the following situations?			
Multiple rules	a) White GK deflects the shot at goal causing the shot to miss. The ball lands out of Court behind the Goal Line	Throw in Black where the ball lands out of Court	8.3.1 (i) (a)	1
Multiple rules	b) White GK lifts White GD who hits the goal ring causing the shot to miss. The ball lands out of Court behind the Goal Line.	Penalty Pass Black where White GD was standing	10.2 (ii) (a) Sanction	1
Multiple rules	c) White GD holds on to the Goalpost while she defends. The shot at goal is successful.	Let Play continue, Advantage Rule Applies, Count goal	9.4.1 (ix) 7.2	1
Multiple rules	d) White GD deflects the shot at goal and the ball passes completely through the goal ring.	Let Play continue Count Goal.	10.1 (iii)	1
During the match	After notifying the Umpire, when may a late arriving player take the Court? a) Immediately after a goal has been scored b) At a stoppage for injury or illness c) Immediately following an interval d) All of the above	d) All of the above	9.2 (iii)	1
During the match	What position would the late player (who usually plays WA) take when she goes onto court? a) She takes the WA position and the person there moves to the vacant position b) She fills the vacant position on court	b) She fills the vacant position on court	9.2 (iii)	1
Match Duration	What is the length of the interval in the following game situations?			
Match	Half time during a one-hour game	c) 12 or 8 minutes		1

Duration	a) 5 or 10 minutes, b) 7 or 12 minutes, c) 12 or 8 minutes		4.1(i)	
Match duration	Half time during extra time - a) 3 minutes, b) 1 minute, c) 5 minutes	b) 1 minute,	4.2(ii)	1
During the match	Black GK taking a throw in steps onto court and passes the ball to Black GD.		8.4.1(i)(e)	
During the match	What is the Infringement (a) No Infringement (b) Incorrect Throw In (c) Stepping Black GK	(b) Incorrect Throw In		1
During the match	What is the Sanction/Action (a) Let Play Continue (b) Free Pass to White where Black GK stepped onto the court (c) Award a Throw in to White	(c) Award a Throw in to White		1
Game management	Black WD continually enters White Goal Circle during the first quarter of the game. The Umpire has both penalised the offside, played advantage and issued a caution as appropriate to each situation.			
Game management	Black WD continues to go offside. What would be the Umpire's next course of action?	Warning	Rule: 13.1(i)(b)	1
Game management	Later in the same quarter, Black WD runs through the Goal Circle at White's Throw In. What action could the Umpire take?	Suspend player.	Rule: 13.1.3	1
Game management	Early in the fourth quarter, Black WD is penalised for Contact. Black's Coach calls out inappropriate comments to the Umpire. What would the progression of action/s –be used.?	(a) Caution (b) Warning (c) Order the person's removal from playing enclosure.	Rule 13.3(ii)(a), (b) & (c)	1

During the match	White GS takes a shot for goal and as they do, the ball slips out of their hands and drops to the ground. Black GK reaches for the ball – to gain possession Black GK rolls it to themself, then passes it to Black C			
During the match	What is the infringement?	No infringement	9.4.1 (i) (b)	1
During the match	What action would the Umpire take?	Let Play continue		1
During the match	White WD catches the ball in the Centre Third and steps back into Black's Goal Third before throwing the ball. The pass is caught by White WA who lands astride White's Goal Third transverse line.			
During the match	What is the infringement? a) Through a third White b) Footwork White WD c) No Infringement	c) No infringement	9.5.2	1
During the match	What action would the umpire take? a) Free Pass Black in White's Goal Third close to the transverse line b) Free Pass Black in the centre Third close to the transverse line by Black's goal third c) Let Play Continue	c) Let Play Continue		1
During the match	Explain the reason for this action:	White WD caught the ball with her first grounded foot in the Centre Third therefore the subsequent pass is deemed to be made from the Centre Third.		1
Whistle	What is the whistle that Umpires use at the beginning of a period of play or to restart play after a stoppage? a) Medium whistle, b) long whistle roll, c) medium whistle roll, d) Long whistle.	d) Long Whistle	Appendix A Rule 5.2.1(ii)(a)	1
Whistle	What whistle is used to instruct the timekeeper to hold time- a) Medium whistle,	c) Medium Whistle Roll	Rule 5 (v)	1

	b) long whistle roll, c) medium whistle roll, d) Long whistle.		Appendix A Rule 5.2.1 (ii)(c)	
Whistle	What whistle is used to end a period of play? a) Medium whistle, b) long whistle roll, c) medium whistle roll, d) Long whistle.	b) Long Whistle Roll	Rule 5(v) Appendix A Rule 5.2.1(ii) (d)	1
Whistle	At the 30 second warning, what type of whistle is used? a) Medium whistle, b) long whistle roll, c) medium whistle roll, d) Long whistle.	c) Medium Whistle roll	Appendix A Rule 8 (i)(a)	1
During the match	Black C tips the ball in an uncontrolled manner twice in the Goal Third before batting the ball to Black WA standing in the Centre Third.			
During the match	What is the Infringement? A) Replayed Ball Black C, b) No Infringement, c) tipping the ball more than once, then batting to another player Black C.	b) No Infringement,	9.4.1(v)(b)	1
During the match	What is the Sanction/Actions? a) Let Play Continue, b) Free Pass White where Black WA caught the ball, c) Free Pass White where Black C tips the ball in an uncontrolled manner.	a) Let Play Continue,		1
Game management	Black Centre is penalised in the Goal Third and stands in the correct position indicated by the Umpire. White WA takes up the position for the penalty not where the umpire has indicated. This is the third time the White WA has moved to an incorrect position when a sanction has been awarded.			
Game management	What is the infringement?	Delaying Play White WA	13.2.1(i)	1
Game management	What action/s would the umpire take?	Award a Penalty Pass to Black where the Black C was	13.2.1(l) Sanction	1

		standing advance and caution the White WA.		
Game management	What is the reason for your action/s:	Player must take up the position for the Sanction indicated by the Umpire and had already been told.		1
Scoring a goal	Black GD is penalised in the Goal Circle for Obstruction. Black GD stands next to the White GA who has the ball and is ready to shoot for goal. White GA decides she wants White GS to take the Shot and puts the ball down on the ground for White GS to come and stand next to the Black GD. Black GK picks up the ball and passes to Black Centre.			
Scoring a goal	What is the Infringement: a) No Infringement b) Held Ball Further penalty awarded	No Infringement	Appendix A Rule 7(i)	1
Scoring a goal	What action would the umpire take: a) Penalty Pass to White where Black GK picked up the ball b) Let Play Continue c) Award a further Penalty as Penalty had not been taken. d) Free pass Black	b) Let Play Continue	Appendix A Rule 7(i)	1
Scoring a goal	What is the reason for your answer? a) Penalty had been set correctly b) Penalty had not been taken c) Player held ball for longer than up to 3 seconds.	Penalty had been set correctly	Appendix A Rule 7 (i)	1
Game management	To manage a match the umpires may, in advance to the normal sanction, use a caution, issue a warning, suspend a player or order a player off. What does this mean for the player who has been given one of these			
Game management	Caution a player: A player is advised	That the behaviour specified must change	13.1(i)(a)	1
Game management	Issue a Warning: A player is warned	That suspension will follow if the behaviour specified continues	13.1(i) (b)	1

Game management	Suspend a player: A player who is suspended.....	Takes no part in play for 2 minutes playing time.	13.1(i)(c)	1
Contact	Black WD is standing in the goal third near the transverse line. White WA takes the ball in the air in the centre third and lands on top of the Black WD in the Goal third.		12.2.1 (i)	
Contact	What is the infringement?	Contact White WA		1
Contact	What is the sanction?	Penalty pass Black in the goal third where the White WA landed on the Black WD.		1
Contact	Black GS is taking a penalty shot near the goalpost. White GD standing 0.9m from Black GS rests their arm across the Black GA's shoulder who is standing in front of Black GS, in an attempt to defend the shot at goal.		12.2(i) 12.1	
Contact	What is the Infringement (a) No Infringement (b) Inevitable Contact White GD Contact White GD	(c) Contact White GD		1
Contact	What is the Action/Sanction (a) Let Play Continue Award a Penalty to Black	(b) Award a Penalty to Black	Sanction	1
Obstruction	White GK is penalised for contact near the Goal Line in the Goal Circle. Black GS takes the penalty. White GD standing outside the Court, attempts to defend the shot at goal.			
Obstruction	What is the Infringement; a) Defending from out of court White GD, b) Penalty not taken, c) No Infringement.	a) Defending from out of court White GD	& 7.1.3 (ii)	1
Obstruction	What is the Sanction/Action: a) Let Play Continue, b) Retake original Penalty, c) Award Penalty on Court opposite where White GD defended from - both players to stand out of play, d) Throw In Black	c) Award Penalty on Court opposite where White GD defended from - both players to stand out of play	Rule 7.1.3 (ii) Sanction	1

