

# NZ THEORY EXAM

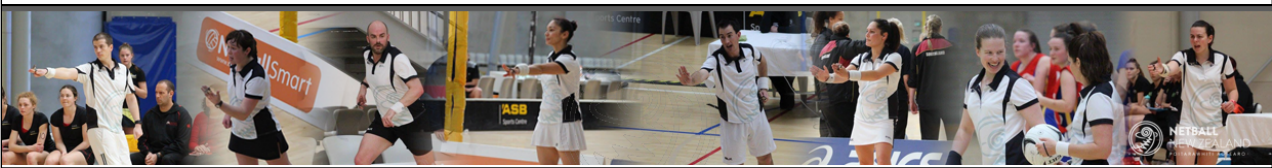
September 2017



Time Allowed: 90 minutes

## PLEASE READ THESE CAREFULLY BEFORE STARTING THE TEST

1. Teams are referred to as Black and White.
  2. It is NOT necessary to specify the infringer must stand beside and away from the player taking the penalty. Similarly, it is NOT necessary to specify the Umpire blows the whistle when penalising an infringement.
  3. Read all questions carefully.
  4. Answer only what is asked in a clear and concise manner.
  5. For infringements where a general statement can cover a wide range of specific infringements, the specific statement must also be used. Example: Incorrect playing of the ball - Tip, bat, catch.
- THERE ARE 41 QUESTIONS and a total of **80 marks** available.
  - **You must gain 68 marks (85%) in order to pass.**



Page 1

## TECHNICAL SPECIFICATIONS

*This section of the exam, tests your knowledge of the court, it's related areas, the goal posts, and the ball.*

**1. A Goal Circle is located at each end of the court. This is a semicircle with a radius of:**

- 4m (13ft)
- 4.9m (16ft)
- 4.25m (13.9ft)

Page 2

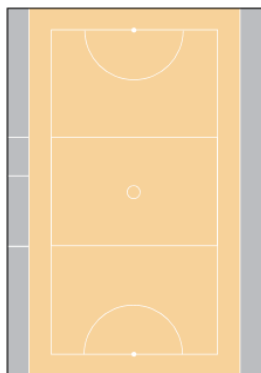
© 2017 Netball New Zealand

## TECHNICAL SPECIFICATIONS

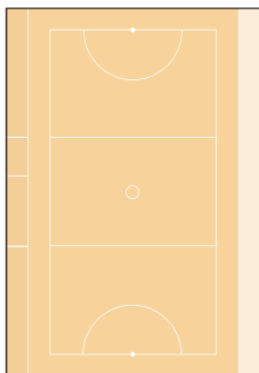
*This section of the exam, tests your knowledge of the court, it's related areas, the goal posts, and the ball.*

**2. Drag and drop the correct name of the Court related area shown by the highlighting into the boxes below.**

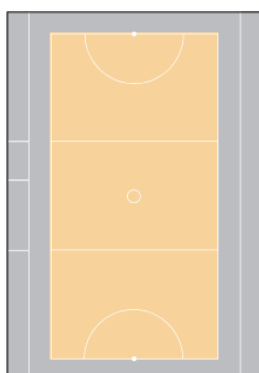
Field of Play



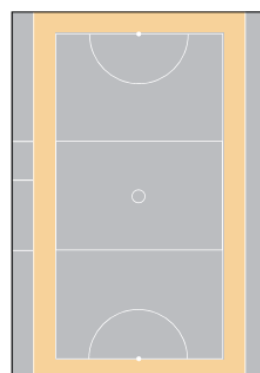
Playing Enclosure



Court Surround



Court



Page 3

## MATCH PERSONNEL

*This section of the exam tests your knowledge around the team, match officials and technical officials.*

**3. How many timekeepers are there in a match?**

- 2  
 3  
 4

**4. When may the Captain approach the Umpires for clarification of a rule?**

- At a stoppage  
 At an interval  
 At an injury  
 At a blood stoppage

**5. Prior to the game the Captains toss for the choice of goal end or first Centre Pass. Who must they notify of the result?**

- Their team  
 Their coach  
 Scorers  
 Scorers and umpires

**6. May a player wear a medic alert bracelet if it is not taped? (Yes/No)**

No  
Yes  
No

Page 4

## STARTING PLAY

*This section of the exam tests your knowledge of the rules at the start of play including; organisation, centre pass, out of court, throw in and toss up.*

**7. The player taking the Throw In must wait for all players to be on court before releasing the ball. (True/False)**

Page 5

## STARTING PLAY

*This section of the exam tests your knowledge of the rules at the start of play including; organisation, centre pass, out of court, throw in and toss up.*

**8. Black WD arrives just after the whistle to start the game and quickly runs on Court to the vacant WD position.**

**8a. What is the Infringement?**

- No infringement
- Black WD entering the court while play is in progress

**8b. What is the Sanction/Action?**

- Free pass White where the ball was when play stopped - Black WD is sent from the Court until the correct time for entry
- Let play continue
- Penalty pass White where the ball was when play was stopped

**8c. Explain the reason for your action.**

If a position is left vacant, a late arrival may not enter the court while play is in progress, they must wait until a goal has been scored (in which case they must play in the position left vacant), a stoppage of injury/illness or blood or an interval.

Page 6

© 2017 Netball New Zealand

## STARTING PLAY

*This section of the exam tests your knowledge of the rules at the start of play including; organisation, centre pass, out of court, throw in and toss up.*

**9. Black GA and White GD take part in a Toss Up in the Goal Circle. White GD is penalised for moving too soon. Black GS takes the ball and shoots successfully for goal.**

**9a. What is the Infringement?**

- Shooting from a free pass Black GS
- Moving at a Toss Up White GD
- No infringement

**9b. What is the Sanction/Action?**

- Let play continue
- Free Pass White where Black GS shot for goal, discount goal
- Free Pass Black where White GD moved at the Toss Up

Page 7

## STARTING PLAY

*This section of the exam tests your knowledge of the rules at the start of play and during the match.*

**10. Determine whether each image correctly demonstrates conditions for controlling the centre pass.**

**(a)**

- Correct
- Not Correct



**(b)**

- Correct
- Not Correct



**(c)**

- Correct
- Not Correct

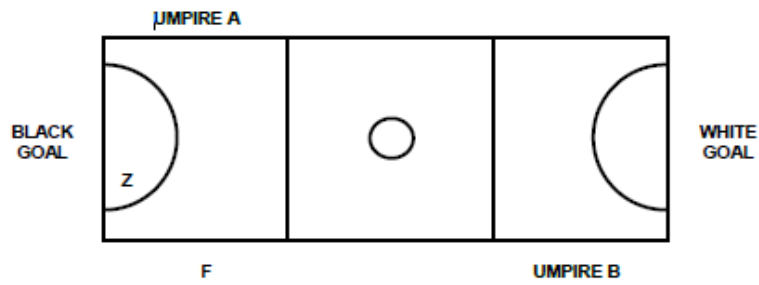


Page 8

## STARTING PLAY

This section of the exam tests your knowledge of the rules at the start of play and during the match.

Refer to the diagram below for questions 11 and 12



11. Black has the first Centre Pass at the start of a game.

11a. Which Umpire starts play?

- Umpire A  
 Umpire B

11b. Which Umpire would take a Toss Up at Point Z?

- Umpire A  
 Umpire B

12. White scores the first goal. Which Umpire is responsible for the following?

12a. Restarting play?

- Umpire A  
 Umpire B

12b. Ruling out of Court at Point F?

- Umpire A  
 Umpire B

Page 9

## DURING THE MATCH

This section of the exam tests your knowledge of the rules during the match.

13. In an extreme circumstance and in consultation with the event organiser, can the umpires decide to abandon a match if safety of players and/or officials is considered to be at risk? (Yes/No)

14. A Centre may reach over and roll the ball to herself as long as no part of her touches the ground inside the Goal Circle. (True/False)

15. The two Centres simultaneously go offside into the Goal Circle, neither had any contact with the ball. Play should Continue. (True/False)

16. Can the opposition team make a substitution at a blood stoppage? (Yes/No)

Page 10

© 2017 Netball New Zealand

## DURING THE MATCH

*This section of the exam tests your knowledge of the rules during the match.*

17. A player may hold the ball for 3 seconds and then pass the ball. True/False

18. A late player may enter the game as soon as they arrive at the courts. (True/False)

19. The coach is allowed to call for a stoppage when a player is hurt. (True/False)

Page 11

## DURING THE MATCH

*This section of the exam tests your knowledge of the rules during the match.*

20. In an attempt to intercept a pass, Black GA falls to the ground in the Centre Third. While on the ground, Black GA attempts to pick up the ball before White C gains possession.

20a. What is the Infringement?

- Attempting to gain possession while on the ground Black GA
- No infringement

20b. What is the Sanction/Action?

- Let play continue
- Let play continue, advantage rule applies
- Free pass White where Black GA attempted to gain possession

20c. Explain the reason for your action.

A player may not gain possession of the ball whilst on the ground. As White C, a member of the non-offending team picked up the ball, the advantage rule is applied and play continues.

20d. What would the umpire's action be if the Black C picked up the ball?

Free pass White where Black GA attempted to gain possession

Page 12

© 2017 Netball New Zealand

## DURING THE MATCH

*This section of the exam tests your knowledge of the rules during the match.*

**21. The ball is loose on the ground in the Centre Third. Without picking up the ball, White C bats the ball to White GS.**

**21a. What is the Infringement?**

- No infringement
- Batting the ball White C

**21b. What is the Sanction/Action?**

- Let play continue
- Free Pass Black where the White GS caught the ball
- Free Pass Black where the ball was batted

**21c. What would the umpire's action be if the White C picked the ball up before she batted it to White GS?**

By picking the ball up, it is deemed that the White C had possession and therefore that she would have lost possession before batting the ball to White GS.

The umpire's action would therefore be Free pass Black where White C batted the ball

Page 13

## DURING THE MATCH

*This section of the exam tests your knowledge of the rules during the match.*

**22. Black GA is shooting for goal and the White GK is defending correctly. At the end of three seconds, White GK overbalances and places a hand on the ball**

**22a. What is the Infringement?**

- No infringement
- Held ball Black GA
- Contact on the ball White GK
- Obstruction White GK

**22b. What is the Sanction/Action?**

- Let play continue
- Free Pass White where Black GA had a held Ball
- Penalty Pass Black where White GK put her hands on the ball
- Penalty Pass Black where white obstructed

Page 14

© 2017 Netball New Zealand

## DURING THE MATCH

*This section of the exam tests your knowledge of the rules during the match.*

**23. White GA and Black C catch the ball at the same time in the Centre Third. At the time the ball is caught Black C's heel is partly outside the court.**

**23a. What is the Infringement?**

- Simultaneous Possession of the ball White GA and Black C
- Black C out of Court
- No Infringement
- Simultaneous Possession of the ball White GA/Black C. Black C out of court

**23b. What is the Sanction/Action?**

- Let play continue
- Throw In White where Black C went out of court
- Toss Up in Centre Third by White GA/Black C

Page 15

## DURING THE MATCH

*This section of the exam tests your knowledge of the rules during the match.*

**24. White C catches the ball in Black's Goal Third. White C steps forward into the Centre Third and passes the ball that is intercepted by the Black GD in White's Goal Third.**

**24a. What is the Infringement?**

- No Infringement
- Ball over a Third White
- Ball over a Third Black

**24b. What is the Sanction/Action?**

- Let play continue, Advantage Rule applies
- Free Pass Black in Goal Third where ball was caught
- Free Pass White in Goal Third where ball was caught

**24c. What would the umpire's actions be if the White C caught the ball in the centre third and stepped back into Black's Goal Third before passing the ball to the White GS?**

Let Play Continue

Page 16



## MATCH DURATION

*This section of the exam tests your knowledge around match duration including match length and extra time.*

**25. If a game is drawn at full time and a result is required, what is the procedure?  
List all 6 steps in the correct order for full marks, use numbers to indicate each step.**

1. There is an interval of 4 minutes at the end of full-time
2. First half of extra time not exceeding 7 minutes
3. Half-time of 1 min, teams change ends at half-time.
4. Second half of extra time the same length as the first half.
5. In the event that a tie is remaining at the end of extra time, a visual signal is placed at the official bench
6. Play continues until one team leads by two goals.

Page 17

## MATCH DURATION

*This section of the exam tests your knowledge around match duration including match length and extra time.*

**26. What is the length of the interval in the following game situations?**

**26a. Half time during a one hour game**

- 5 or 10 minutes
- 7 or 12 minutes
- 12 or 8 minutes

**26b. Half time during extra time**

- 3 minutes
- 1 minute
- 5 minutes

**27c. White GS is shooting for goal and the Black GK is standing with her hands up at 0.6m. Both umpires blow their whistles at the same time, one for the infringement, the other for the end of the quarter. What action would the umpires take?**

End the quarter as the sanction had not been awarded (verbalised).

Page 18

## PROTOCOLS

*This section of the exam, tests your knowledge of the games protocols.*

**28. What is the whistle that Umpires use at the beginning of a period of play or to restart play after a stoppage?**

- medium whistle
- long whistle roll
- medium whistle roll
- long whistle

**29. During Play (for an infringement, a toss up or ball out of court) what whistle is used?**

- medium whistle
- long whistle roll
- medium whistle roll
- long whistle

**30. What whistle is used to instruct the timekeeper to hold time?**

- medium whistle
- long whistle roll
- medium whistle roll
- long whistle

Page 19

## PROTOCOLS

*This section of the exam, tests your knowledge of the games protocols.*

**31. What whistle is used to end a period of play?**

- medium whistle
- long whistle roll
- medium whistle roll
- long whistle

**32. At the 10 second warning, what type of whistle is used?**

- medium whistle
- long whistle roll
- medium whistle roll
- long whistle

**33. At the 30 second warning, what type of whistle is used?**

- medium whistle
- long whistle roll
- medium whistle roll
- long whistle

Page 20

© 2017 Netball New Zealand

## SCORING A GOAL

*This section of the exam tests your knowledge around scoring a goal including; requirements for scoring a goal and taking a shot.*

**34. Black GS is allowed to shoot for goal if she wins the ball at a toss up. (True/False)**

**35. White GA shoots for goal as Black GD defends from the correct distance. As the ball is on its downward flight, Black GD deflects the ball and it lands out of court.**

**35a. What is the Infringement?**

- Ball out of Court Black
- No infringement
- Deflecting the ball on its downward flight, Black GD

**35b. What is the Sanction/Action?**

- Let play continue
- Penalty Pass White where Black GD deflected the ball
- Free Pass White Black GD deflected the ball
- Throw In White

**35c. What action would the umpires take if Black GD knocked the goal post, causing the shot to miss?**

Penalty pass White where Black GD knocked the goalpost during the shot at goal unless this disadvantages White, in which case it would be taken where White GA shot for goal

Page 21

## GAME MANAGEMENT

*This section of the exam tests your knowledge around game management including actions that may be taken by umpires, foul play and discipline of team officials and bench players.*

**36. Black C continually enters White Team's Goal Circle during the first quarter of the game. The Umpire has played advantage and penalised the player going offside a number of times.**

**36a. What is the Infringement?**

- Persistent infringing Black C
- Foul play Black C - unfair play (Intimidation)
- Foul play Black C - dangerous play
- Foul play Black C - unfair play

**36b. What is the Sanction/Action?**

- Penalty Pass White
- Penalty Pass White and player is cautioned
- Penalty Pass White player is given an official warning

Page 22

© 2017 Netball New Zealand

## CONTACT

*This section of the exam tests your knowledge around contact including; contact and contest, interference.*

**37. Black C accidentally pushes into White WA causing the WA to fall to the ground. While on the ground, White WA attempts to pick up the ball.**

**37a. What is the Infringement?**

- No Infringement
- Contact Black C
- Attempting to play the ball while on the ground White WA

**37b. What is the Sanction/Action?**

- Let play continue
- Penalty Pass White where Black C accidentally pushes into White WA
- Free Pass Black where White WA attempted to play the ball

Page 23

## CONTACT

*This section of the exam tests your knowledge around contact including; contact and contest, interference.*

**38. Black WD and White C jump in the air to catch a pass. Black WD catches the ball, lands, and turns, pushing the ball into the White C.**

**38a. What is the Infringement?**

- No infringement
- Black WD not giving White C time to move
- Contact Black WD
- Obstruction White C

**38b. What is the Sanction/Action?**

- Let play continue
- Free Pass White where Black WD pushed the ball into White C
- Penalty Pass White where Black WD pushed the ball into White C
- Penalty Pass Black where White C obstructed

Page 24

© 2017 Netball New Zealand

## OBSTRUCTION

*This section of the exam tests your knowledge around obstruction including; obstruction of a player in possession of the ball, obstruction of a player not in possession of the ball, defence involving a player outside the court.*

**39. White C leaves the Court to gain a better playing position. Black WA stops White C from re-entering the court.**

**39a. What is the Infringement?**

- No infringement
- Obstruction Black WA

**39b. What is the Sanction/Action?**

- Penalty Pass White on court where the defending player was standing,
- Let play continue
- Free Pass White on court where the defending player was standing

Page 25

## OBSTRUCTION

*This section of the exam tests your knowledge around obstruction including; obstruction of a player in possession of the ball, obstruction of a player not in possession of the ball, defence involving a player outside the court.*

**40. White GK is penalised for contact near the Goal Line in the Goal Circle. As Black GS takes the penalty, White GD standing partially out of court, attempts to defend the shot at goal.**

**40a. What is the Infringement?**

- Defending from out of court White GD
- No infringement
- Out of court White

**40b. What is the Sanction/Action?**

- Let play continue
- Retake original Penalty
- Award Penalty on Court opposite where White GD defended from out of court - both players to stand out of play
- Throw In Black

Page 26

© 2017 Netball New Zealand

## UMPIRE HAND SIGNALS

This section of the exam tests your knowledge of the hand signals used to support the decisions made while officiating the game of netball.

41. Drag and drop correct hand signal into the boxes below.

Official Warning

Stepping

Advantage

Ball over a third

Goal not scored

Intimidation

Incorrect playing of the ball

Direction of Pass

Short Pass

Footwork

Hold Time



Page 27

## UMPIRE HAND SIGNALS

This section of the exam tests your knowledge of the hand signals used to support the decisions made while officiating the game of netball.

41. Drag and drop correct hand signal into the boxes below.

Hold Time

Stepping

Footwork

Ball over a third

Direction of Pass

Short Pass

Goal not Scored

Incorrect playing of the ball

Advantage

Official Warning

Intimidation



Page 28

© 2017 Netball New Zealand

## UMPIRE HAND SIGNALS

*This section of the exam tests your knowledge of the hand signals used to support the decisions made while officiating the game of netball.*

**41. Drag and drop correct hand signal into the boxes below.**

Direction of Pass

Stepping

Intimidation

Hold Time

Incorrect playing  
of the ball

Footwork

Short Pass

Official Warning

Advantage

Goal not Scored

Ball over a third



Page 29

## END OF THE EXAM

**You have reached the end of this exam.**



**KEEP  
CALM  
AND  
GOOD  
LUCK**

Page 30

© 2017 Netball New Zealand

**END OF THE EXAM**

**You have reached the end of this exam.**

